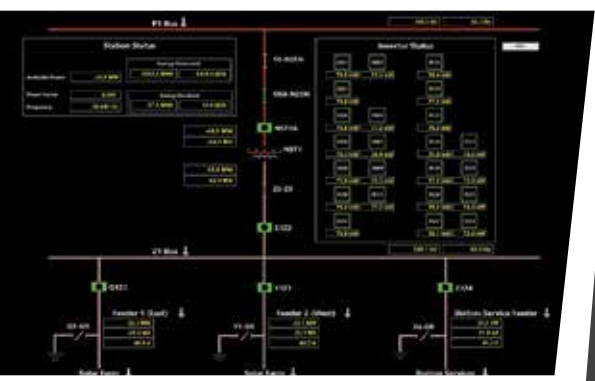




**PIC GROUP'S REMOTE OPERATIONS TEAM IS POSITIONED TO IMPROVE AVAILABILITY, IMPROVE PLANT PERFORMANCE AND REDUCE OPERATING COSTS**



## REMOTE OPERATIONS CENTER

Manned 24-hours per day, 7-days per week, PIC's Remote Operations Center (ROC) combines state-of-the-art technology with highly qualified and experienced Control Room Operators for unmatched operations and control capability.

### VERSATILE PLATFORM FOR ALL TECHNOLOGIES!

- Renewable Energy (Wind, Solar, Hydro)
- Reciprocating Engines, Simple Cycle, Aeroderivative
- Advanced Technologies, Combined Cycle
- Process Equipment, Ancillary Equipment

Compliant with NERC CIP and industry cyber-security standards, PIC Group integrates all available data sources into the ROC for a central hub of operations tailored to a plants unique configuration.

To learn more visit [www.picgroupinc.com](http://www.picgroupinc.com)



**PIC GROUP, INC.**  
 1000 Parkwood Circle  
 Suite 1000  
 Atlanta, GA 30339 USA  
 Tel: +1-770-850-0100  
[www.picgroupinc.com](http://www.picgroupinc.com)





# PIC

## CENTRAL HUB FOR OPERATIONS & MONITORING



### **FOCUSED OPERATIONS & CONTROL**

- Full Start, Stop and Control capability of generation assets and BOP
- Fully documented operations protocols for coordinating ROC and site staff
- Immediate response to plant issues including plant trips, and equipment failures
- ROC provides for extended analytical support teams
- Detect, diagnose, and recommend solutions
- Ensure compliance at all times

### **IMPROVED PLANT PERFORMANCE**

- Production models that minimize lost production through advanced scheduling of maintenance activities
- Advanced Artificial Intelligence Application (AI) modeling to identify and predict failure
- Real-time performance monitoring and analysis of operating trends
- Supervisory level control capability
- Coordinated generation forecasting

### **REDUCED OPERATING COSTS**

- Evaluate key performance indicators
- Identify inefficiencies and potential corrections
- Apply data trends to reduce maintenance costs
- Validate ROI through post-performance analysis